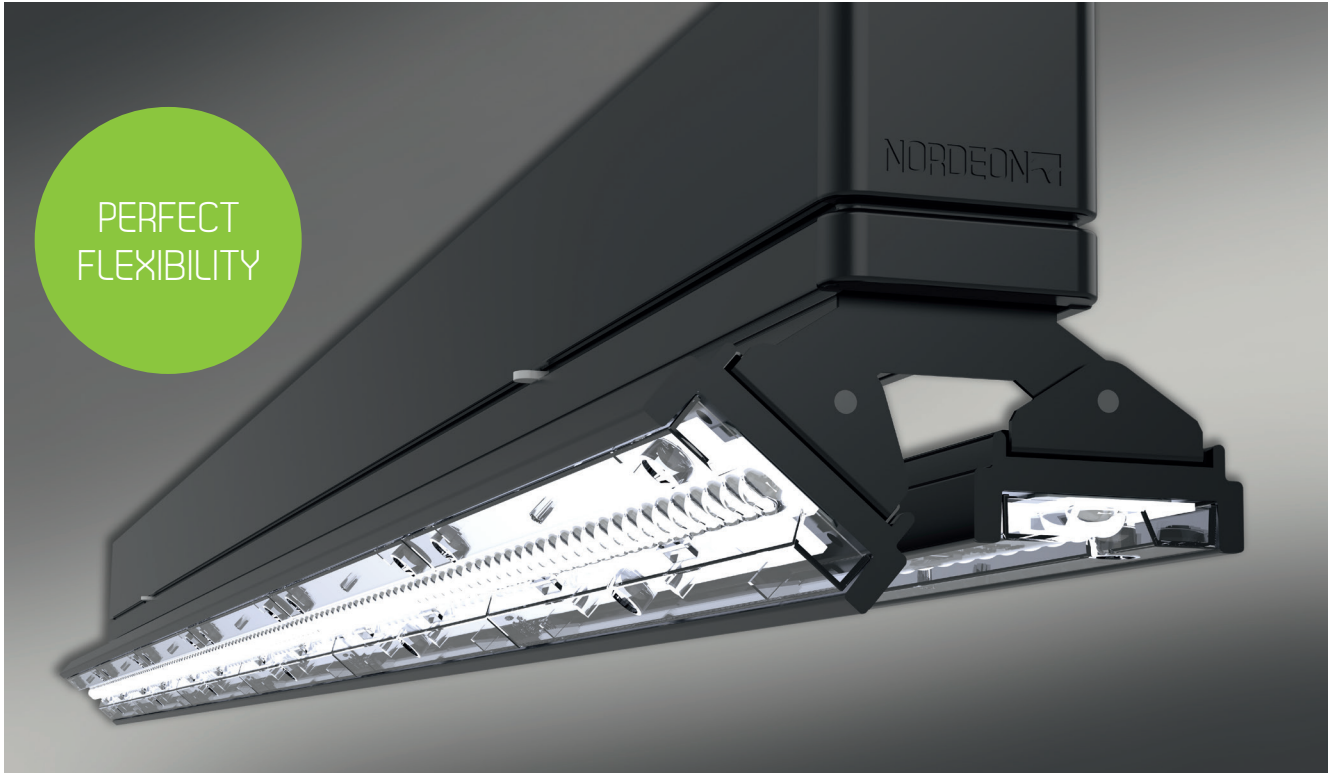


VARIO

BALDUR DOUBLE-WING

PERFECT FLEXIBILITY



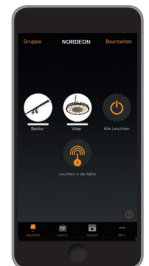
WELL DIRECTED ADJUSTABLE LIGHT AT BALDUR LIGHT LINES

Enables new light line concepts

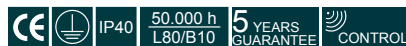
- Double-Wing light unit for integration into Baldur light lines
- Two separately swiveling light panels for even more variety in lighting design
- Well directed light even for broad shelf aisles
- Separate light fittings in the shelves could be omitted
- Highlights vertical surfaces

Optional Smart Lighting

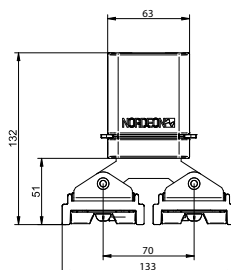
Nordeon offers an easy and intuitive wireless lighting control that can be easily assembled and adapted via a free app. You achieve maximum savings with maximum safety.



PROGRAM-MATRIX VARIO



Luminous flux	2 x 3.200 up to 2 x 10.000 lm
System power	40 up to 140 W
Luminous efficacy	145 up to 160 lm/W (colour temp. 4000 K)
Colour temp. / CRI	4000 K, 3000 K / CRI>80
Optic / Light distribution	medium beam (half peak 74°), separately swiveling panels adjustable in 6 steps à 15°
LED system	2 LED boards (1124mm) or 3 LED boards (1686mm) each with 44 mid power LEDs per light panel
LED degradation	50.000 h (L80B10)
Driver	Standard or DALI
Housing material	Sheet steel, white (RAL9016), silver-grey (RAL9006) or black (RAL9005)
Optic material	PMMA



APPLICATIONS

- Shelf aisle lighting for retail (food, non food, do-it-yourself)
- Logistics, high racks

